

Commercial catalogue



Sociedad Cooperativa Agraria San Sebastián.
Avda. Madrid, 15 / 50.100 La Almunia de Doña Godina - Zaragoza (ARAGÓN - ESPAÑA)
Tel.: +34 976 60 00 50 / Fax: +34 976 81 23 14
www.cosanse.com / cosanse@cosanse.com

Commercial catalogue

Situation



SDAD. COOP. AGRARIA SAN SEBASTIAN

Sociedad Cooperativa Agraria San Sebastián.
Avda. Madrid, 15 / 50.100 La Almunia de Doña Godina - Zaragoza (ARAGÓN - ESPAÑA)
Tel.: +34 976 60 00 50 / Fax: +34 976 81 23 14
www.cosanse.com / cosanse@cosanse.com

INDEX

Presentation	4-5
Commercialization calendars.....	6-7
Fruit catalog	8-9
Cherry	10-11
Apricot	12-13
Plum	14-15
Nectarine	16-17
Peach	18-19
Green apple	20-21
Red apple	22-23
Pear	24-25
Quality and Environment	26-27
Respect for Nature	26-27



Presentation

COSANSE is an agricultural cooperative society, which was built on the 20th. of May of 1955. It is located at La Almunia de Doña Godina, a town 50 kilometers (31,07 miles) away from Zaragoza, the capital of the local region of Aragon.

This is a privileged location as cross roads at the four cardinal points of the Spanish territory:

- 270 kilometers (167,77 miles) East from the capital of Spain, (Madrid).
- 350 kilometers (217,48 miles) West from the local region of Catalonia, (Barcelona).
- 300 kilometers (186,41 miles) South from the local region of Basque Country, (Bilbao).
- 295 kilometers (183,30 miles) North from the local region of Valencia, (Valencia).

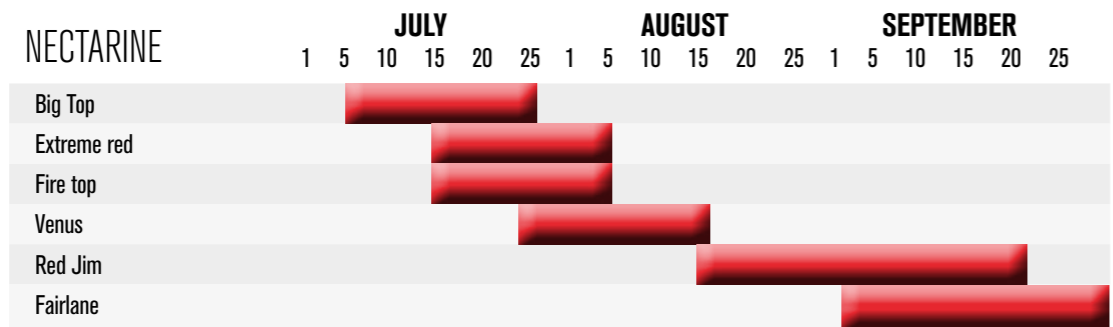
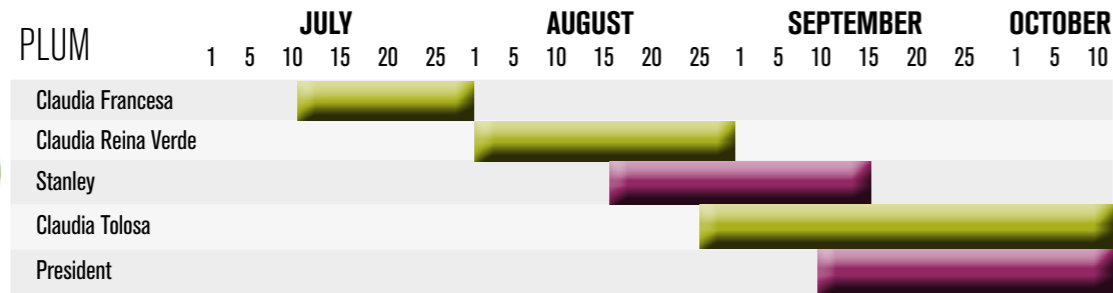
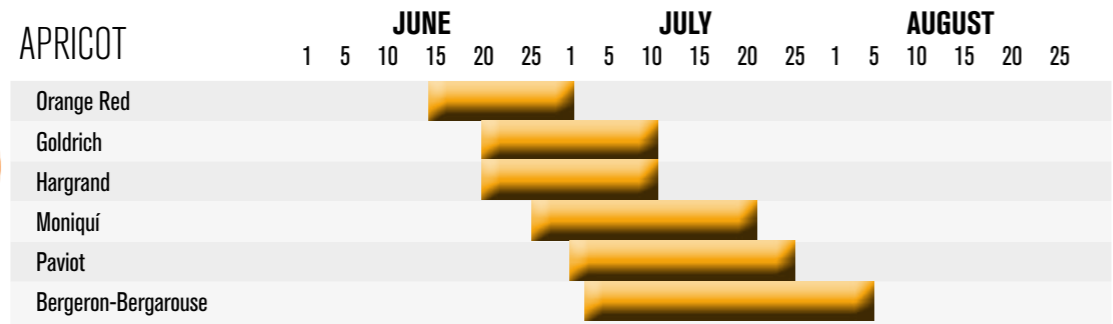
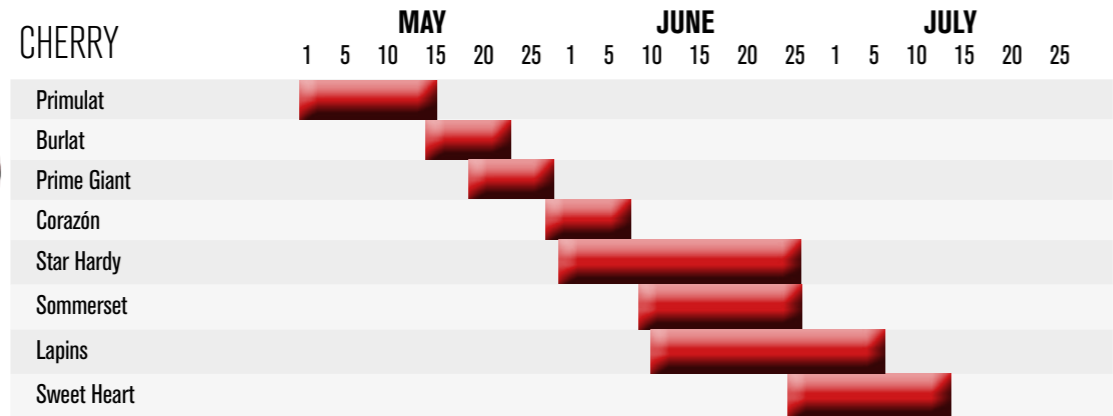
The location of the town La Almunia de Doña Godina is at Middle Jalon area, 370 meters (1.214 feet) above the sea level. The orography, together with the fair climate of the area, are without any doubt, two main factors that guarantee the excellent quality of the fruit production in this area, both in stone fruits varieties as cherries, apricots, nectarines, plums and peaches, and in seed fruits such as apples and pears.

For the last 60 years, COSANSE has maintained in a leading position, both in productive organization and in sales planning among the different agricultural cooperatives at the local region of Aragon.

The acknowledgment of the brand COSANSE as a quality product is a direct consequence of the daily effort of a human team comprising more than 800 productive partners and 75 workers.



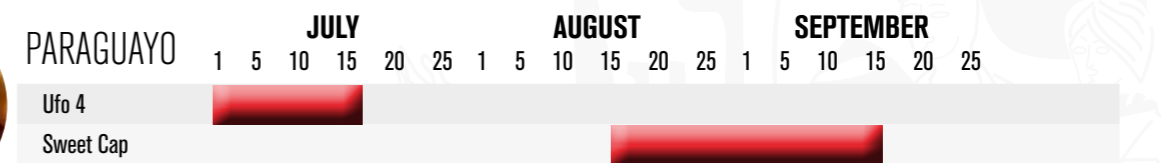
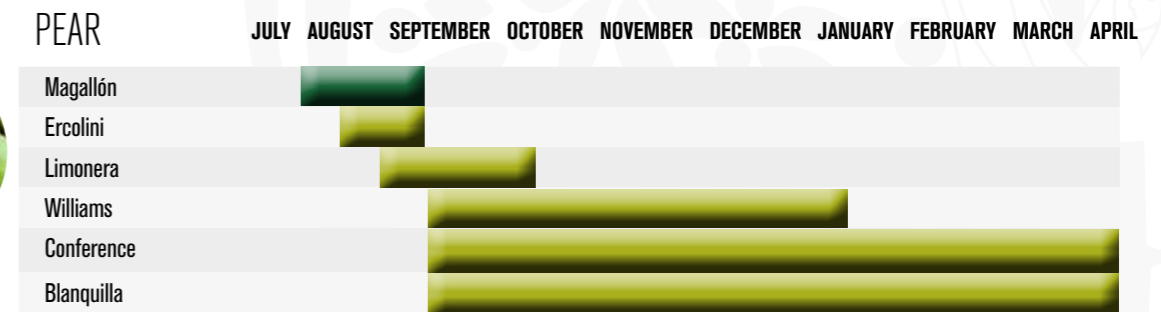
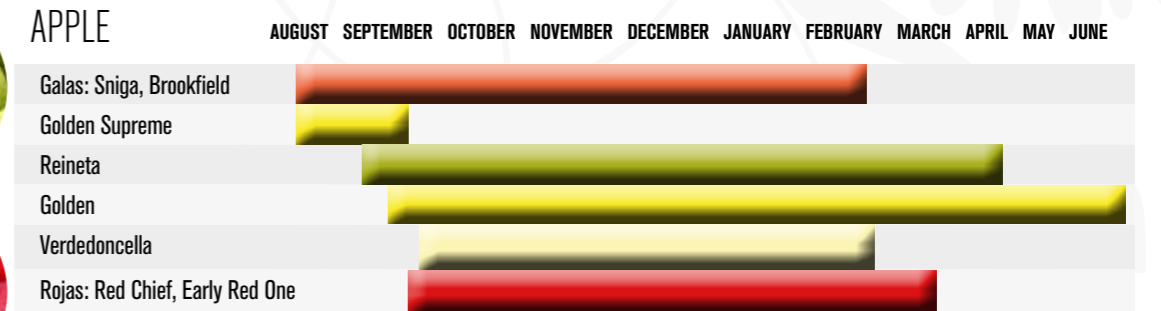
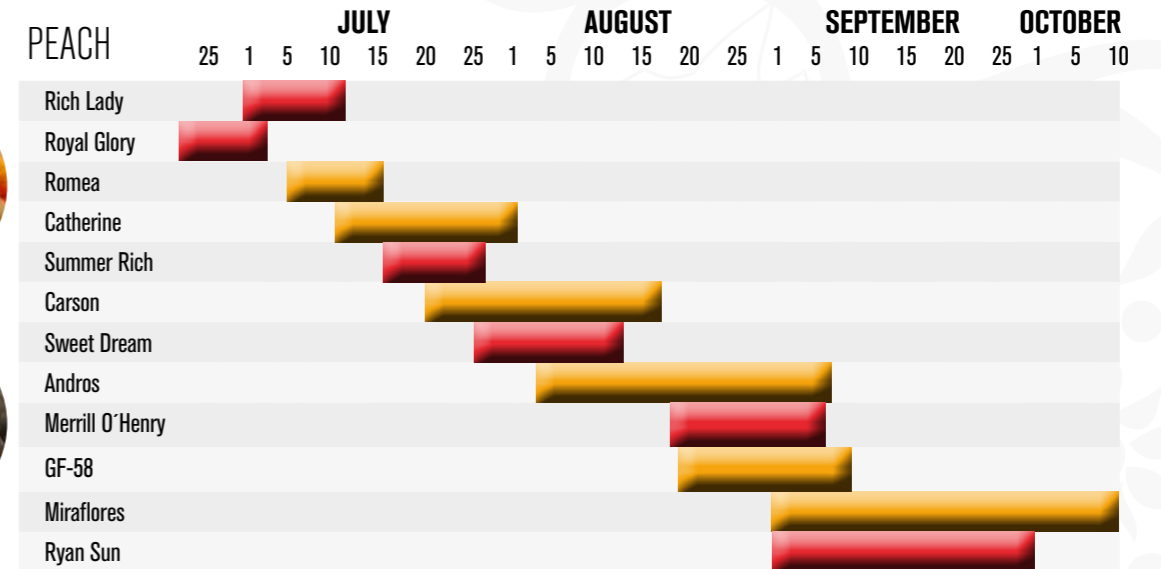
Commercialization calendars.



Amarillos



Rojos



Fruit Catalog

CHERRY



APRICOT



PLUM



NECTARINE



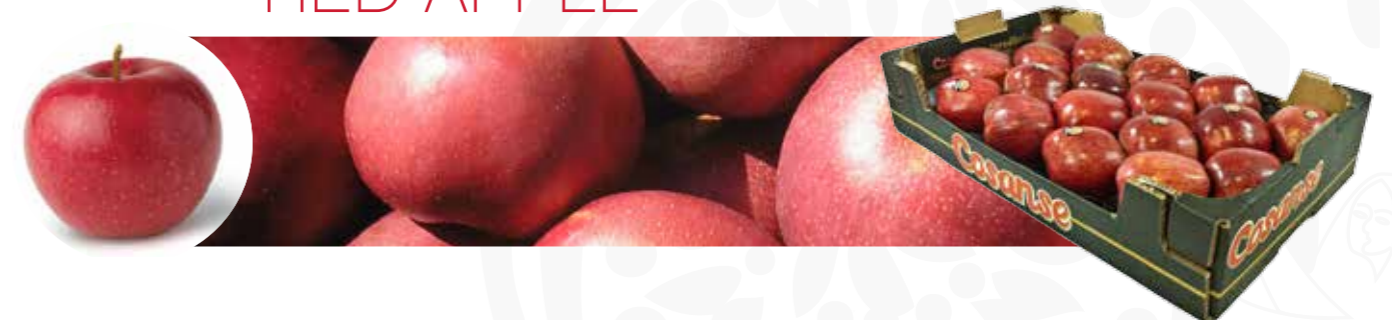
PEACH



GREEN APPLE



RED APPLE



PEAR





CHERRY

GENERAL CHARACTERISTICS

Description:

Entire fruits, undamaged, with the typical colour of each variety and picked with their stalk.

Colour:

From light red to black (depending on their variety).

Texture:

Generally firm and crunchy although texture is also dependent on variety.

Taste:

Very sweet and pleasant, being slightly sub-sharp in some varieties.



PACKING SPECIFICATIONS

Format confection	Presentation	Kind of container
Basket ½ kg (1.10 lb.) Flow Pack	10 baskets x 0'5 kg	Carton 60x40x10
Basket 1 kg (2,20 lb.) Flow Pack	10 baskets x 1 kg	Carton 60x40x14
In bulk Premium	2 kgs (4,41 lbs) net/unit	Fiber 20x30x10
In bulk	2 kgs (4,41 lbs) net/unit	Wood 20x30x10
In bulk	5 kgs. (11,02 lbs) net/unit	Wood 30x40x10





APRICOT

GENERAL CHARACTERISTICS

Description:

Entire fruits, undamaged, picked with the typical colour of each variety.

Colour:

From yellow to high red (depending on their variety).

Texture:

Firm.

Taste:

Sweet and pleasant, being slightly sharp in some varieties.

PACKING SPECIFICATIONS

Format confection	Presentation	Kind of container
Basket 1 kg (2.20 lb.) plastic mesh	10 baskets x 1 kg	Carton 60x40x14
In bulk	5 kgs (11,02 lbs.) net/unit	Wood 30x40x10
In box	1 layer by caliber	Carton 50x30x10 /60x40x10





PLUM

GENERAL CHARACTERISTICS

Descripción:

Entire fruits, undamaged, with the typical colour of each variety and picked with their stalk.

Colour:

Depending on the variety of plum.

Texture:

Firm, slightly melty (depending on their variety).

Taste:

Variable, depending on variety, from very sweet to sub-sharp.



PACKING SPECIFICATIONS

Format confection	Presentation	Kind of container
Basket 1 kg (2.20 lb.) Mesh	10 baskets x 1 kg	Carton 60x40x14
In bulk	5 kgs (11,02 lbs.) net/unit	Wood 30x40x10
In box	1 layer by caliber	Carton 50x30x10 /60x40x10





PEACH

GENERAL CHARACTERISTICS

Description:

Entire fruits, undamaged, with the typical colour of each variety. Yellow flesh.

Colour:

From light yellow to high red (depending on their variety).

Texture:

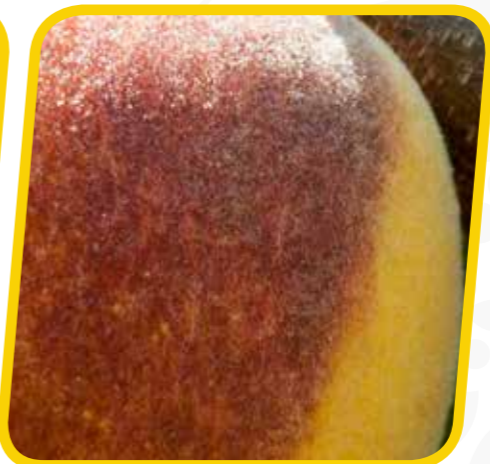
Generally firm, although it can be slightly melty in some varieties.

Taste:

Very sweet and pleasant.

PACKING SPECIFICATIONS

Format confection	Presentation	Kind of container
Basket 1 kg (2.20 lb.) Mesh	10 baskets x 1 kg	Carton 60x40x14
In bulk	8 kgs (17,64 lbs) net/unit	Wood 50x30x18
In box	1 layer by caliber	Carton 50x30x10 / 60x40x10
In box	2 layers by caliber	Wood 50x30x15 / 50x30x18 Carton 60x40x17





NECTARINE

GENERAL CHARACTERISTICS

Description:

Entire fruits, undamaged, with the colour or colours typical of each variety. Yellow flesh.

Colour:

Depending on their variety, from bicolour (red-yellow) to high red.

Texture:

Firm and crunchy.

Taste:

Sweet, slightly sharp depending on variety.

PACKING SPECIFICATIONS

Format confection	Presentation	Kind of container
Basket 1 kg (2.20 lb.) Mesh	10 baskets x 1 kg	Carton 60x40x14
In bulk	8 kgs (17,64 lbs) net/unit	Wood 50x30x18
In box	1 layer by caliber	Carton 50x30x10 / 60x40x10
In box	2 layers by caliber	Wood 50x30x15 / 50x30x18 Carton 60x40x17





GREEN APPLE

GENERAL CHARACTERISTICS

Description:

Entire fruits, undamaged, with the colour or colours typical of each variety.

Colour:

Depending on their variety, from green to yellow soft.

Texture:

Firm, tending to crunchy.

Taste:

Very sweet and pleasant. Sharp in some varieties.

Varieties:

Green Apple: Golden Delicious, Granny Smith, Reineta, Verdedoncella.

PACKING SPECIFICATIONS

Format confection	Presentation	Kind of container
Bag 2 kgs (4,41 lbs)	6 bags x 2 kg	Carton 60x40x17
In bulk	15 kgs (33,07 lbs) net/unit	Wood 50x30x26
In box	1 layer by caliber	Carton 50x30x10 / 60x40x10
In box	2 layers by caliber	Wood 50x30x15 / 50x30x18 Carton 60x40x17





RED APPLE

GENERAL CHARACTERISTICS

Description:

Entire fruits, undamaged, with the colour or colours typical of each variety.

Colour:

Depending on their variety, from bicolor to the red one intense.

Texture:

Firm, tending to crunchy.

Taste:

Very sweet and pleasant. Sharp in some varieties.

Varieties:

Red and bicoloured apples: Gala, Red Delicious, Fuji.



PACKING SPECIFICATIONS

Format confection	Presentation	Kind of container
Bag 2 kgs (4,41 lbs)	6 bags x 2 kg	Carton 60x40x17
In bulk	15 kgs (33,07 lbs) net/unit	Wood 50x30x26
In box	1 layer by caliber	Carton 50x30x10 / 60x40x10
In box	2 layers by caliber	Wood 50x30x15 / 50x30x18 Carton 60x40x17





PEAR

GENERAL CHARACTERISTICS

Description:

Entire fruits, undamaged, with the typical colour of each variety and picked with their stalk.

Colour:

Green, with russetting in Conferencia variety.

Texture:

Firm.

Taste:

Very sweet and pleasant.

PACKING SPECIFICATIONS

Format confection	Presentation	Kind of container
Basket 1 kg (2.20 lb.) Mesh	10 baskets x 1 kg	Carton 60x40x14
In box	1 layer by caliber	Carton 50x30x10 / 60x40x10
In box	2 layers by caliber	Wood 50x30x15 Carton 60x40x14





Quality and Environment

Total Quality is our kind of philosophy: the experience of our partners and their adequate fields for production, our staff, and our facilities which enable us to handle and store 25.000.-tons of fruit a year. All of this, results in Top Quality Fruit which is continuously and steadily produced and distributed.



Respect for Nature

Our more than 1.000.- hectares distributed around Valdejalón area, which are our best productive asset. All our production processes are submitted to the most rigorous phytosanitary controls: Traceability and Integrated Production (which includes also integrated plague control), and quality fruit audited as Global Gap. We are proud of guarantee the respect for Nature and our constant commitment with the Environment.





Commercial catalogue

Sociedad Cooperativa Agraria San Sebastián.
Avda. Madrid, 15 / 50.100 La Almunia de Doña Godina - Zaragoza (ARAGÓN - ESPAÑA)
Tel.: +34 976 60 00 50 / Fax: +34 976 81 23 14
www.cosanse.com / cosanse@cosanse.com